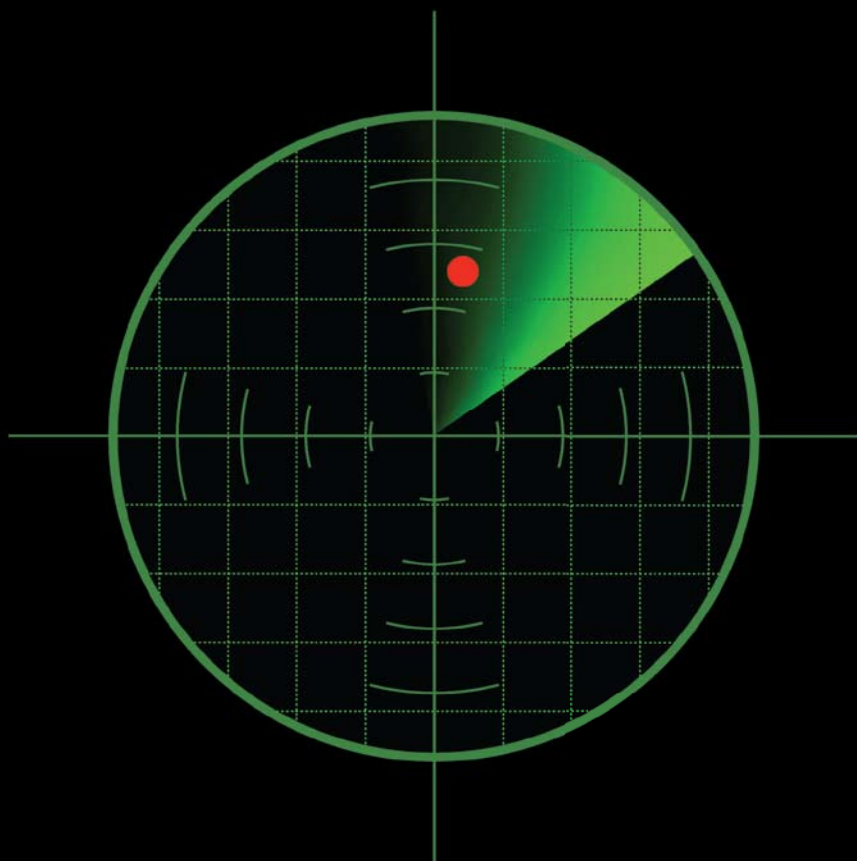


B L A D D E R C A N C E R



IF BLADDER CANCER ISN'T ON YOUR RADAR, HOW WILL YOU KNOW IT ISN'T IN YOUR PATIENTS?

While cervical cancer gets more attention, bladder cancer is both more common (60% more new cases diagnosed in 2008)¹ and deadlier based on cancer surveillance data.²



The NMP22[®] BladderChek[®] Test
Add more precision to your protocol.[™]

Add more precision to your urinalysis protocol. Improve your odds of diagnosing bladder cancer earlier.

Urine dipstick tests are an important part of your patient workup. However, there's one more step you can take after hematuria is detected. The NMP22[®] BladderChek[®] Test is CLIA Waived and can improve your ability to diagnose bladder cancer earlier. Within minutes, the NMP22[®] BladderChek[®] Test can improve your ability to detect the presence of bladder cancer by using just a few drops of urine.

The NMP22[®] BladderChek[®] Test

- CLIA Waived as an aid for the Early Diagnosis of Bladder Cancer
- Reimbursement Available
- CPT-86294QW \$28.64 (2009 CMS National Limit)

To learn more about this simple way to make a big difference in patient care,
call **1-866-563-5518**

¹2008 American Cancer Society Statistics – 17,580 new cases of bladder cancer per year vs. 11,070 new cases of cervical cancer per year.

²2008 American Cancer Society Statistics – 4150 bladder cancer deaths compared to 3,870 deaths from cervical cancer.



Matritech, Inc. manufactures the NMP22[®] BladderChek[®] Test. Matritech, NMP22 and BladderChek are trademarks of the Inverness Medical group of companies. ©2009 Inverness Medical. All rights reserved.

