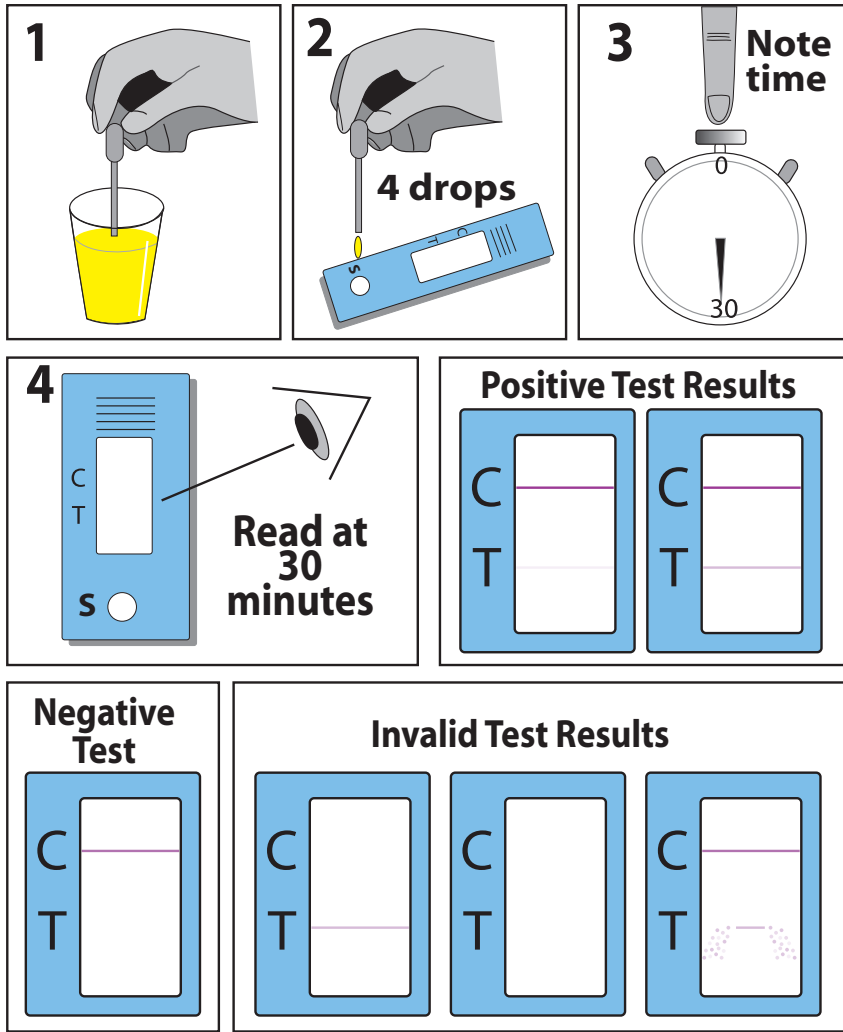


# NMP22<sup>®</sup> BladderChek<sup>®</sup> Test

## User Guide



Read package insert carefully before performing test.

NMP22<sup>®</sup> and BladderChek<sup>®</sup> are registered trademarks of the Inverness Medical group of companies.

### Procedural Notes

- Collect voided urine in a plastic specimen cup. Do not use catheterized or barbotage urine.
- Test urine within two hours of collection. Urine may be kept at room temperature until the test is performed. Do not refrigerate or freeze the urine sample.
- If test device was stored refrigerated, keep package sealed until it reaches room temperature.
- Inspect device packaging for perforations or tears. If damaged, do not use.
- Open test device package immediately prior to use.
- Avoid bubbles when drawing urine sample into pipette.
- Read test result at 30 minutes (but no later than 50 minutes) after application to the sample ("S") well.
- Report results as *negative* or *positive*.
- Repeat invalid test result using new test device.